

## Summary

Highly experienced and skilled iOS App Developer. Proven ability to work independently or as part of a team. Adept at technical troubleshooting.

## Skills

### Core Competencies

Mobile application (iOS) - 9+ years  
Geographic information system (GIS)  
Embedded system

### Languages

Swift / Objective-C / C / C++ / Python  
Java / C# / JavaScript / Lua

### DevOps / Business Tools

Xcode / Visual Studio / IntelliJ / Zeplin  
Github / Gitlab / Slack / JIRA / Trello

### Databases

MySQL / Oracle / SQLite / Realm

## Work experience

### Grab

2020.01 - Present

#### Lead Engineer (Mobile)

Grab Driver App

- Developed In app navigation (Southeast Asia's) Mobile Client

### Coupang

2018.08 - 2019.01

#### Senior Software Development Engineer

Rocket delivery application / Delivery Flex application

- Developed Delivery support app.
- Coupang Flex is similar that Amazon Flex.

### Freerancer

2018.06 - 2018.08

#### Senior iOS Developer

Touch Here (Childfund Korea)

- Developed donate to children app.
  - <https://itunes.apple.com/kr/app/id1436558943?mt=8>

Trymoon

- Developed Women's shoes shopping mall app.
  - <http://trymoon.kr/>

### MYLO Company

2017 - 2018.05

#### Senior iOS Developer

Mylo's Lead iOS Developer.

Developed MYLO O2O Service app that Fitness Studios, Classes and Experiences reservation service.

- <https://www.mylo.co.kr/>

### Freerancer

2015 - 2016

#### Senior iOS / GIS Developer

BRUNT

- Developed IoT Home Automation app and Today extension. Used wifi pairing and GeoFence with CoreLocation.
  - <https://brunt.co/>

ELIOT

- Developed Restaurant order, payment solution app. Used GeoFence with iBeacon.
  - <http://www.appstore.com/eliot>

Natrium Care

- Developed Salinity measurement app. Connect NaCl Salinity Meter via BLE.

ExMan

- Developed Taekwondo dojo management app. Used the Realm database and socket networking.

nexHOME

- Developed Remote home heating control app. It's IoT solution. Used GeoFence with CoreLocation.

Atlan 3D Cloud Navigation

- Developed navigation UI and porting Android JNI to iOS native, converted navigation core engine for 32bit to 64bit.
  - <http://www.atlan.co.kr/products/mobile/atlan3d.do>

Work 30 minutes

- This app is find park or museum and stuff to walk on within 30-60 minutes.
  - <https://youtu.be/6T1NLUqNps>

### PinkFactory

2014 - 2015

### CTO

Square Asteroid

- Developed casual game, used Corona SDK with lua.
  - <https://youtu.be/9s9OnoLdFwM>

### OPENmate

2011 - 2014

### iOS Developer / GIS Engineer

OPENmate OpenMap Server / Client

- Developed Web Map engine. Used Openlayers with JavaScript.

Open a store

- Developed iOS app to view commercial area analysis and sales forecasts, franchise information, and more

Driving Time Area

- Extraction of a range that can be moved from a specific location to driving in time. Provide RESTful API. Used Java Topology suite library.

### Mappers

2008 - 2010

### GIS Engineer

Garatagi(Transfer)

- Developed Kimpo airport transfer information service app for WinCE and iPhone. My part is map draw and search facilities.

GBIS(Gyeong-gi province Bus Information System) integration

- Developed Road link / node and bus stop matching tool. Used C++ and MFC.

### Extronics

2007 - 2008

### Firmware developer

Crane remote controller firmware maintenance. (ARM7v / 8052)

Developed Crane rollover prevention module. Used 8052 processor and tilt sensor.

### Korea National Open University

2013 - 2018

### Bachelor of Computer Science. August, 2018

## Education

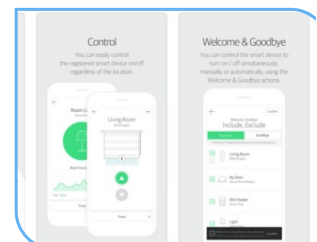
## Portfolio



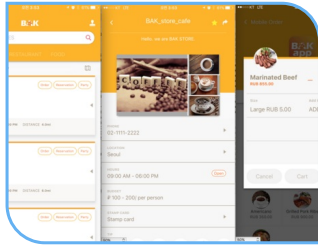
Touch Here



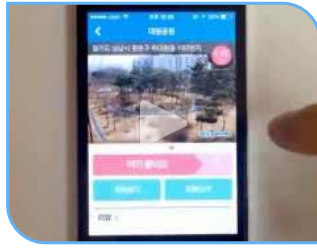
MYLO



BRUNT



**ELIOT**



**Walk 30minutes**



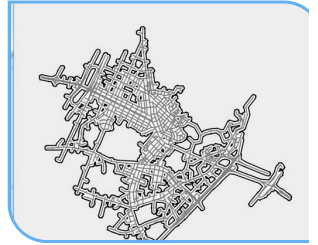
**Square Asteroid**



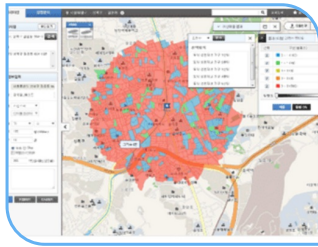
**Atlan 3D Cloud Navigation**



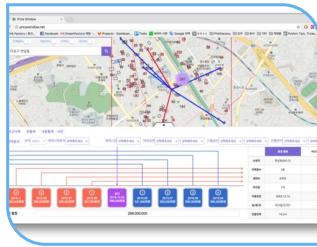
**Open a store**



**Driving Time Area**



**Business area analysis**



**Price Window**



**Store Story**